

Report of North East Divisional Community Safety Partnership

Report to Outer East Area Committee

Date: 3rd July 2012

Subject: North East Divisional Community Safety Partnership Annual Report

Are specific electoral Wards affected?	<input checked="" type="checkbox"/> Yes	<input type="checkbox"/> No
If relevant, name(s) of Ward(s): Temple Newsam Crossgates & Whinmoor Garforth & Swillington Kippax & Methley		
Are there implications for equality and diversity and cohesion and integration?	<input type="checkbox"/> Yes	<input checked="" type="checkbox"/> No
Is the decision eligible for Call-In?	<input type="checkbox"/> Yes	<input checked="" type="checkbox"/> No
Does the report contain confidential or exempt information?	<input type="checkbox"/> Yes	<input checked="" type="checkbox"/> No
If relevant, Access to Information Procedure Rule number: Appendix number:		

Summary of main issues

1. To update ward members of the overall performance of the North East Divisional Community Safety Partnership and Neighbourhood Policing Teams for 2011/12
2. To provide an overview of the work undertaken by the partnership within the locality to reduce crime and disorder

Recommendations

3. The Area Committee is asked to note the contents of this report of the North East Divisional Community Safety Partnership.
4. Members are asked to continue supporting the Divisional Community Safety Partnership in relation to prioritising and tackling Burglary Dwelling during 2012/13 through partnership work at neighbourhood level.

1 Purpose of this report

1.1 The report will focus on the following key issues:

- Update Members on progress and outputs of the Neighbourhood Management Tasking Arrangements
- Report on Thematic Sub Groups and activities
- Report on the Performance of the NE Police Division and partnership
- Summary of ward crime statistics, public confidence and user satisfaction
- Report on multi agency 'Operation Champions'
- Report on agreed community initiatives funded via Proceeds of Crime confiscations (POCA).

2 Background information

2.1 This report provides Members of the Area Committee with an overview of the performance of the North East Divisional Community Safety Partnership and ward based Neighbourhood Policing Teams. It will also include details of the key initiatives that have been delivered in local communities to reduce crime and disorder. The report focuses upon the period 1st April 2011 to 31st March 2012.

3 Main issues

3.1 Performance Framework

3.2 The Divisional Community Safety Partnership (DCSP) will continue to develop activity and management performance against strategic outcomes of the city, defined by The Safer and Stronger Communities Board Partnership plan 2011-2015 which will focus on delivering the following strategic priorities:

- Reducing crime levels and its impact across Leeds
- Effectively Tackle and Reduce Anti-social behaviour in our Communities

3.2 We are currently awaiting ratification of the Safer Leeds performance targets and performance framework for 2012/13 (North East Police Divisional Targets are outlined in Appendix A)

3.3 Attached is an updated structure chart for the North East Divisional Community Safety Partnership (see Appendix B) with details of the relevant lead officers. The structure is continuously reviewed to ensure delivery against new priorities

3.4 Operation Champion

3.5 Several 'Multi agency operation days of action' have been carried out across the ward during 2011/12 and have been based around themes and deployed into areas of concern. Due to the successful embedding of partnership work and daily problem solving into core business and improved communication between partner agencies, the need for intensive six weekly planned operations has eased . We

will continue to deliver operations during 2012/13 with a minimum requirement of four operations per year per Neighbourhood policing team

3.6 **POCA**

3.7 Following the success of the project over the last four years, the North East Division allocated a total of £38,145 funding confiscated from criminals under the Proceeds of Crime Act to the Divisional Community Safety Partnership during 2011/12 to continue to support local groups with community projects/activities. In total, across the whole division, we approved and funded 99 applications and spent £28,519. The remaining balance was carried forward to the new financial year and has been spent during April/May. We have received numerous emails showing appreciation and thanks for support. Information regarding the awards continue to be advertised in the neighbourhood management / Neighbourhood Policing Team newsletters and on the police Neighbourhood Policing Team websites. We will be continuing the scheme into 2012/13 (Appendix C provides a summary of projects funded in the Inner North East area)

3.8 **Public Confidence and Satisfaction**

3.9 North East Leeds continues to have the highest Public Confidence in Local Policing during 2011/12 at 62.0 % (March 2011) compared with the West Yorkshire force average of 54.6 %.

3.10 Operation Confidence commenced in February 2009 and is a contributing factor to the high rates of public confidence. The North East Division produces 11 neighbourhood management newsletters detailing partnership activity around crime and grime within the Neighbourhood Policing Team and delivers to 128,000 households three times a year. Feedback from residents continues to be positive and illustrates they are pleased to be kept informed around crime and grime issues. Funding has been secured for 2012/13 and contributions have been agreed by North East Police Division, East North East Homes, Safer Leeds Partnership and Aire Valley Homes.

3.11 **Joint Police Community Safety Officer Protocol between Leeds City Council and West Yorkshire Police**

3.12 In April 2011, the Council agreed to extend the existing arrangement with West Yorkshire Police Authority to retain the level of Police community safety officers (PCSO'S) in Leeds. The investment by the Council was awarded on the basis of strengthening arrangements between PCSOs, Neighbourhood Policing Teams and Leeds City Council Services. One particular aim is to support the improved delivery of locally identified environmental priorities and this was supported at the Council's Executive Board in September 2011.

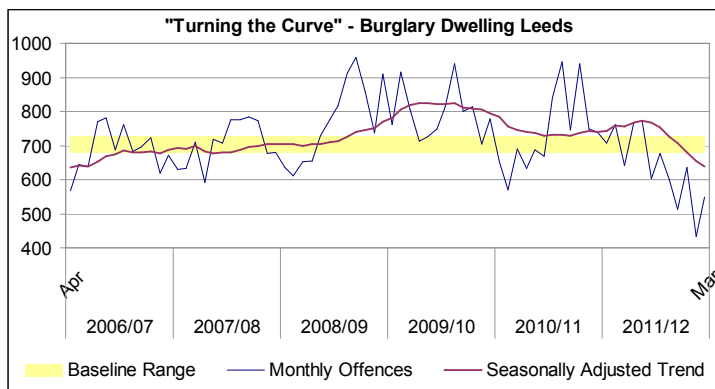
3.13 There are strong links between crime and disorder and environmental issues and this protocol is aimed at ensuring the quality of the local environment is incorporated into the work of crime reduction partnerships. It is important that the fear of crime, heightened by issues such as graffiti, litter and abandoned vehicles, is addressed. This protocol provides a coordination and tasking mechanism for Neighbourhood Policing Teams, Police community safety officers and Council

Officers to jointly deliver better outcomes in respect of environmental issues and enforcement in localities. In North East the PCSOs and neighbourhood policing teams are playing a pro-active and re-active role in addressing environmental issues. In Feb /March 2012 the East North East environmental action team have delivered a six week training input on Divisional training days to all PCSO's to ensure that they have a greater knowledge and understanding of environmental issues to enable them to contribute effectively.

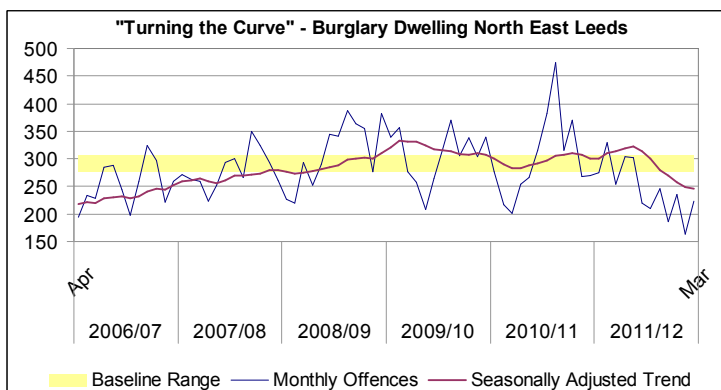
3.14 Burglary Dwelling

3.15 Burglary Dwelling remains a key pressure in relation to allocation of resources both staffing and financial. Tackling burglary dwelling remains the key priority within the Division and across the whole of Leeds, we are working closely with Safer Leeds Strategic burglary group and partner agencies to maximise opportunities for closer working and sharing good practise and continue to deliver initiatives at a local neighbourhood level.

3.16 Overall a very successful Year, burglary dwellings are down 13.6% across the whole city on the same period last year (1207 less offences)



3.17 Overall Year to date offences for North East Leeds are down 18.4% on the same period last year. (669 less offences)



3.18 Ward Risk Matrix

3.19 The below table illustrates In Leeds there are currently nine strategic localities of concern. Within the Outer East Committee area there are no areas within the localities of strategic Concern .

Ward	Apr-11	May-11	Jun-11	Jul-11	Aug-11	Sep-11	Oct-11	Nov-11	Dec-11	Jan-12	Feb-12	Mar-12	12 Month Total	12 Month % Change	Colour Key
Hyde Park & Woodhouse	Very High	Very High	High	High	High	High	High	High	High	High	High	High	597	36.0%	Very High Concern High Concern Some Concern Low Concern Strategic Area
Bramley & Stanningley	Very High	High	High	High	High	High	High	High	High	High	Some	High	420	8.5%	
Burmantofts & Richmond Hill	Very High	High	High	High	High	High	High	High	High	High	High	High	407	-29.5%	
Headingley	Very High	High	High	High	High	High	High	High	High	High	High	High	407	3.3%	
Armley	High	High	High	High	High	High	High	High	High	High	High	High	390	-34.6%	
Gipton & Harehills	Very High	High	High	High	High	High	High	High	High	High	High	High	383	0.3%	
Killingbeck & Seacroft	High	High	High	High	High	High	High	High	High	High	High	High	361	-16.2%	
Kirkstall	Very High	High	High	High	High	High	High	High	High	High	High	High	358	-32.7%	
Chapel Allerton	High	High	High	High	High	High	High	High	High	High	High	High	309	-29.1%	
Cross Gates & Whinmoor	High	High	High	High	High	High	High	High	High	High	High	High	298	5.7%	
Farnley & Wortley	High	High	High	High	High	High	High	High	High	High	High	High	290	-16.9%	
Temple Newsam	High	High	High	High	High	High	High	High	High	High	High	High	248	-28.5%	
Calverley & Farsley	High	High	High	High	High	High	High	High	High	High	High	High	246	0.8%	
Pudsey	High	High	High	High	High	High	High	High	High	High	High	High	245	7.9%	
Weetwood	High	High	High	High	High	High	High	High	High	High	High	High	245	-17.2%	
Moortown	High	High	High	High	High	High	High	High	High	High	High	High	238	-10.2%	
Roundhay	High	High	High	High	High	High	High	High	High	High	High	High	225	-19.6%	
Beeston & Holbeck	High	High	High	High	High	High	High	High	High	High	High	High	212	-4.9%	
City & Hunslet	High	High	High	High	High	High	High	High	High	High	High	High	206	8.4%	
Middleton Park	High	High	High	High	High	High	High	High	High	High	High	High	193	4.3%	
Alwoodley	High	High	High	High	High	High	High	High	High	High	High	High	163	-12.8%	
Adel & Wharfedale	High	High	High	High	High	High	High	High	High	High	High	High	161	0.0%	
Horsforth	High	High	High	High	High	High	High	High	High	High	High	High	156	-37.6%	
Morley North	High	High	High	High	High	High	High	High	High	High	High	High	141	-10.2%	
Morley South	High	High	High	High	High	High	High	High	High	High	High	High	109	-12.1%	
Rothwell	High	High	High	High	High	High	High	High	High	High	High	High	99	-26.1%	
Garforth & Swillington	High	High	High	High	High	High	High	High	High	High	High	High	90	-31.3%	
Guiseley & Rawdon	High	High	High	High	High	High	High	High	High	High	High	High	87	-30.4%	
Harewood	High	High	High	High	High	High	High	High	High	High	High	High	87	-26.9%	
Otley & Yeadon	High	High	High	High	High	High	High	High	High	High	High	High	87	-42.0%	
Kippax & Methley	High	High	High	High	High	High	High	High	High	High	High	High	77	-24.5%	
Ardsley & Robin Hood	High	High	High	High	High	High	High	High	High	High	High	High	74	-18.7%	
Wetherby	High	High	High	High	High	High	High	High	High	High	High	High	73	-6.4%	

3.20 Most Active/Amber Nominals/Burglary Group

3.21 Following a short pilot during the summer of 2011 we have now implemented a new sub group of the North East Divisional Community Safety partnership that manages most active and amber burglary offenders focussing initially in the strategic areas of concern that fall outside of the existing Integrated offender management system . A process has been drawn up using the principles of the Integrated offender management structure and support has been agreed with key partners including Youth Offending service , Signpost , Drugs offender Management Unit , Probation ,Leeds Anti Social Behaviour unit , East North East Homes , Aire Valley Homes and North East Police Division . The work is now linking into the 100 Methodology at cluster level . The group meets on a monthly basis and looks at how best to manage individuals offending behaviour through offering support or taking enforcement action.

3.22 **Neighbourhood Management Tasking Key Achievements 2011/12**

3.23 The eleven neighbourhood management tasking teams continue to meet six weekly and are still firmly embedded into agencies day to day business and members continue to attend and support meetings.

3.24 This is not an exhaustive list of activities but includes key achievements from each of the neighbourhood management tasking teams within the inner north east area

3.25 **Temple Newsam**

- Operation Champion 6th May – Halton /Colton focussing on burglary
- Community clean up in Halton Moor on 24th July
- Completion of sash jammer/door chain project in burglary hot spot areas
- Joint work with Leeds Federated housing regarding anti social behaviour and noise nuisance on Conistone gardens resulting in the eviction of the tenant
- Intelligence from partner agencies regarding drugs led to a successful warrant on Esthwaite gardens Halton Moor
- East Leeds Unity day 6th August , supported by tasking partners
- 13 July 2011 Enviromental audit completed. Waste in Gardens notices served on private houses and sites cleared. A property on Neville Parade received a £1,000 fine for non-compliance following enforcement action from Leeds City Council and East North East Homes
- Continued partnership work with Leedswatch to maximise CCTV footage opportunities – Flytipper caught dumping in Temple Newsam woods and successful prosecution
- Site visit co-ordinated with private owner regarding nuisance motorbikes on grassland in Halton Moor – rigorous enforcement using off road bikers and footage from Leedswatch
- Community payback team now working from 119 Kendal drive and working on various environmental issues on Halton Moor
- Osmondthorpe One stop shop , problems with security resolved and closer working with PCSO'S
- Support of partners re community clean up with Leeds Youth cells/Meadowfield primary school and 80 church young people on Saturday 15th October
- OTRA Clean up carried out 11-10-2011 6 skips provided by ENEHL. Ginnels Cleared by community pay back team

3.26 Crossgates & Whinmoor

- Off road bikes awarded £2.5k from tasking budgets.
- PCSO drop-in centre set up at Cross Gates shopping centre.
- Targeted work by Police/LASBT working with Sanctuary Housing regarding a specific tenant causing nuisance - tenant subsequently gave up tenancy before eviction.
- The tasking group identified two buildings that have been subject to anti social behaviour, crime and vandalism. As well as Police prioritising these buildings to address these issues they are now both on the South East Top 10 derelict sites
- Installation of a security gate at White Laithe's Shops to reduce crime and anti-social behaviour.

3.27 Garforth & Swillington and Kippax & Methley

- Targeted multi agency work in Garden Village, Micklefield regarding nuisance and harassment to neighbours. Notice served and resident gave up tenancy before hearing.
- Successful problem solving involving Aire Valley Homes, Leeds Anti social behaviour team and Neighbourhood policing team tackling Anti social behaviour and nuisance that was affecting St Benedicts Primary School.
- Glencoe Gardens, Kippax – alleged drug dealing. Tenant visited by police and as a result the introductory tenancy was extended rather than secure tenancy awarded.
- An extension to the no cold calling zone in Ringways Garforth agreed and implemented . The area now incorporates all the bungalows and houses predominantly housing elderly people that had been targeted by cold callers and bogus workmen.
- The Police have continued to use covert cameras with some success, to bring charges against individuals involved in bogus calling

3.28 Thematic Sub Groups and Activities

3.29 Off Road Bikes /West Yorkshire Police

3.30 The Outer East area committee (June 2011) contributed towards the lease costs to retain 2 motorcycles within the division for a 12 months period, The North East Police Division continued to fund the running costs such as fuel , specialist uniform and staff resources . The information below outlines the performance and some examples of successes in the area committee area

August 2011 October 2011

Stop searches: 3

Calls attended: 30

Section 59 warnings: 21

Vehicle seizures: 9

Arrests/Summons:7

Cannabis Warnings: 1

November 2011 January 2012

Stop searches: 10

Calls attended: 11

Section 59 warnings: 10

Vehicle seizures: 4

Arrests/Summons:4

February 2012 April 2012

Stop searches: 7

Calls attended: 22

Section 59 warnings: 15

Vehicle seizures: 6

Arrests/Summons: 3

Cannabis Warnings: 2

The police unit work alongside Leeds City Council Parks and Countryside Riders at events such as operation champions and days of action, working with agencies such as warrants officers, Vehicle operative service agency (VOSA), Drivers and Vehicle License Agency (DVLA) and housing. The unit is prevalent at major events such as Party in the Park, Opera in the Park, festivals and events at Temple Newsam. The unit also attend scout groups and schools to give inputs promoting the unit and preventative work. The unit are utilised to search for and locate high risk missing persons in open ground and woodland.

- 3.31 Below is one quote from the Neighbourhood policing website which advertises the good work undertaken and shows the vast reduction in complaints since the off road unit was reformed.

“The North East Leeds Off Road Unit, funded in partnership with your local councillors and working alongside Leeds Council Parks and Countryside Officers

have reduced calls by a massive 45% compared to the same period in 2010. In 2010 we received 282 calls, this year we have received 157.”

Examples

- Following several complaints of a nuisance blue and white Yamaha off road motorcycle in the New Stourton Lane area of Garforth the motorcycle was spotted by members of the neighbourhood policing team on the main road pulling a 'wheelie.' With the assistance of the off road unit and good local knowledge this motorcycle was found hidden in a garage nearby. The £2000 motorcycle was seized and destroyed and the rider received a fine of £385 and 9 points on his driving licence for careless driving, driving without insurance or a licence.
- On routine patrol a stolen motorcycle was spotted and recovered at Garforth Train Station. The rider was located and arrested. He pleaded not guilty and the case went to trial. Based on the officers and Leeds city council riders evidence the man was found guilty and received a very large fine and points.
- In June a man from the Garden Village area of Micklefield was arrested for driving without due care and attention. He attended court and received 9 penalty points and a hefty fine. His motorcycle has been destroyed.
- Following concerns of excessive speeding several checks have been conducted in Swillington, Kippax, Great Preston, Methley, Whinmoor, Stanks, Crossgates and Garforth using the new Unipar Speed Gun. Concerns have been raised about motorcycles travelling along Selby Road particularly on Wednesdays and weekends. We will continue to monitor these hotspots. We are a regular fixture outside the schools in the area during rush hours when children are at their most vulnerable on their way to and from school.
- Following a report that two men were breaking into a garage in Kippax the off road unit were first to arrive on the scene. The two men were caught inside the garage, red handed and arrested. All of the property was recovered and returned to the owner. Both men were found guilty of burglary at Leeds Magistrates Court and fined.
- Patrols have been increased around the Kippax Leisure Centre, resulting in a reduction in complaints. A 14 year old was searched and found to be in possession of cannabis, he is due to attend Leeds Youth Court.
- A man was arrested from Primrose Valley after stealing cabling from the railway lines. He received a caution.
- A stolen Yamaha XT125R worth £2200 was recovered from Halton Moor Woods and returned to its owner.
- A stolen Peugeot Scooter was found abandoned in Primrose Valley and returned to its owner.
- A PCSO spotted a man riding a Quad on Embleton Road in Methley. He called in the off road unit and it was revealed that the Quad was unlicensed and uninsured. It was seized and destroyed and the rider issued with a section 59 warning.
- Following a sharp spot by the Leeds Watch CCTV in Halton Moor a young man was stopped on Halton Moor Avenue riding a 110cc pitbike, the motorcycle was seized and he was issued with a section 59 warning.
- Dennil Road in Crossgates had been a hot spot for complaints, as such patrols have been stepped up. Whilst watching over the street a man pulled around the corner on a Peugeot Speedfight Scooter, wearing no helmet. As he had no licence,

no insurance and no helmet the scooter was seized. The man received 9 penalty points and a large fine at court. The scooter has been destroyed.

- Over one hot summer weekend there were several calls about an off road motorcycle with distinctive gold wheel rims. Thanks to the information passed by members of the public the motorcycle was stopped on Ash Tree Grove, Swarcliffe and seized. The following day a local man decided to take his Yamaha YZF out on Stanks Avenue. These types of motorcycle are purely for off road use. The motorcycle was seized and destroyed and the man attended court where he was disqualified from driving and heavily fined.
- Following a complaint from the Leeds City Council depot on the Redhalls officers attended and seized an uninsured Quad from near a travellers site. Two men decided to try and tow away the Quad and were arrested. They both received cautions for obstructing police in the execution of their duty.
- The Unit responded to a call on Smeaton Approach about a black and yellow off road motorcycle which had been riding on the fields near to John Smeaton School. The motorcycle was spotted and the driver attempted to evade officers but in his panic drove down a cul-de-sac. With nowhere to go he gave himself up to officers. The young driver received a reprimand and the motorcycle was seized.
- Officers came across a Honda NSR motorcycle on Osmondthorpe Lane, the owner was in the process of bump starting it on the road in order to sell it. Checks revealed that neither the owner nor the buyer was insured to use the motorcycle on a road. As a result the motorcycle was seized and both men were reported for summons.
- Following a report of a male falling from the bridge on the old railway line at Stanks, officers were first on the scene to administer first aid and guide in the air ambulance as the area was impassable to all other vehicles.

3.32 **Hate Crime MARAC**

3.33 Co-ordinated multi agency working is recognised as the most effective response to all issues of crime and disorder, including agency responses to the victims and perpetrators of hate crime. The hate Crime Multi-Agency Risk Assessment Conference (HC MARAC) continues to meet monthly. The overall objectives of the group is to:

- Support and assist victims of hate crime in order to protect them and ensure that they are not re-victimised.
- Ensure that effective co-ordinated multi agency enforcement action is taken against perpetrators of hate crime to prevent their re-offending and to ensure successful prosecution outcomes at Court.
- Contribute to the "Hate crime reduction agenda in Leeds".

3.34 Overall the Outer East area has shown a decrease of 19.23% of hate crimes reported, and this equates to a reduction of 10 crimes - a total of 42 crimes reported compared to 52 during 09/10.

3.35 **Domestic Violence MARAC**

3.36 The North East Divisional MARAC continues to meet monthly to develop multi-agency interventions to support victims of domestic violence. Overall a very

successful year in relation to reduction of repeat victimisation of cases managed through the MARAC.

3.37 **CCTV - Leedswatch**

- 3.38 Leedswatch provides a monitoring service for public space surveillance cameras covering open spaces across Leeds. The CCTV control room is staffed, and cameras are recorded 24 hours per day, 365 days a year. The service also provides two mobile CCTV vehicles for deployment within communities across Leeds.
- 3.39 The main objective of the service is to reduce crime and the fear of crime through the use of CCTV technology, leading to improved crime prevention, and an increase in the detection and prosecution of offenders.
- 3.40 CCTV is one of a number of Service functions delegated to Area Committees. The Area Committee's role in relation to this function is to 'maintain an overview of the service in the Committee area and receive regular information about it.
- 3.41 The Leedswatch service works in partnership with a large number of internal and external partners such as; Urban Traffic Control (UTC), Emergency Planning, Leeds Anti-Social Behaviour Team (LASBT), West Yorkshire Police, WY METRO and other Local Authorities across the West Yorkshire sub-region
- 3.42 There are currently a total of 35 public space surveillance CCTV camera's monitoring the North East Inner Committee Area, via the Central CCTV Control Room at Middleton, they are located in the following street area as follows:
Wykebeck Mount (4 cameras) - Selby Avenue - Wykebeck Avenue (2 cameras) - Wykebeck Street - Wykebeck Road - Halton Moor Avenue - Halton Moor Road (2 cameras) - Ingleton Drive - Firbank Grove - Kendall Drive - One Stop Shop Halton Moor - Neville Road - Carden Avenue - Rathmell Road - Kendal Drive - Coronation Parade - Cartmell Drive - Lakeland Court - Westminster Crescent - Crossgates (Station Road and Austhorpe Road) – Fiddlers Lane (Garforth) – Chapel Lane (Garforth) - High Street (Kippax) - Crosshill (Kippax) - Halton Village (Main Street 3 cameras) - Swillington Village (2 cameras)
- 3.43 Within the last 12 months the mobile vans have been deployed for a total of 4 months within the Killingbeck Policing Area and patrols have been deployed in specific areas highlighted by the police specifically in relation to identified crime 'hot spots'. The vehicles are evenly deployed throughout the year between the three policing divisional areas. The deployment of the mobile vans is co-ordinated by the police.
- 3.44 There are charges levied to the Outer East Area Committee regarding public space surveillance camera(s) for 2011/12 which amounts to £18,116 as illustrated in the below table.

Camera Location	Ward	Maintenance	Monitoring	Line Rental	Total revenue cost per camera
Swillington (2 Cameras)	Garforth & Swillington	£1,000	£1,000	N / A	£2,000
Garforth (2 cameras)	Garforth & Swillington	£1,000	£1,000	N / A	£2,000
Kippax (2 cameras)	Kippax & Methley	£1,000	£1,000	N / A	£2,000
Halton Village (3 cameras)	Temple Newsam	£1,500	£1,500	N / A	£3,000
Cross Gates (2 cameras)	Cross Gates & Whinmoor	£1,000	£1,000	£7,116	£9,116

- 3.45 The LeedsWatch service this year has undertaken a critical role in the delivery of the Leeds Burglary Reduction programme, assisting with the identification and detection of offenders using the City wide LeedsWatch network, mobile CCTV vans and the West Yorkshire Police Automatic Number Plate Recognition (APNR) system to detect cross boundary offenders and supporting city wide and locality based operations.
- 3.46 In total within the last 12 months there have been a total of 216 arrests recorded between 1st April 2011 and March 31st 2012 within the police North East Policing Area, covering a wide range of offences such as drugs, burglary, criminal damage, arson, assaults, robbery, theft including theft from motor vehicles, offensive weapon, public disorder and drink driving offences.
- 3.47 Within the Outer East Committee Area there have been a total of 38 arrests including two on suspicion of murder and six for burglary recorded between April 2011 and March 31st 2012 .
- 3.48 CCTV footage has been requested in relation to 1757 incidents within the North East Leeds Policing area for a various number of offences which provides evidence in relation to the criminal investigations relevant to identification of suspect(s) and a total of 467 incidents relate to the Outer East Committee Area.
- 3.49 **Improving the Out of Hours Noise Nuisance Service**

Noise nuisance is a major cause for concern across the city. This service was transferred from Environmental Services April last year. Work is still taking place to look at how closer working can be developed with the new anti social behaviour casework teams to deal with persistent offenders and to work in liaison with Customer Access and Performance in providing additional staff to assist in the logging of such Out of Hours Noise Nuisance Calls.

3.50 Supporting the city's most vulnerable residents is also a priority. The Leedswatch service is now responsible for providing a first response to Care Ring alarms. On call 24 hours a day, 7 days per week, this service responds to alarms from mainly elderly clients who may have fallen or find themselves in need of support. Officers attend to the alarm call and contact emergency services, family members or other appropriate individuals, staying with the client to provide support and re-assurance until further help arrives. Improving the information and intelligence we provide to Leedswatch customers is a key priority for the service. We are reviewing how this data is recorded, in the way in which we can provide accurate information to service users, to provide more detail and improve the services analytical and intelligence capacity.

3.51 Leedswatch service is now responsible for the delivery of a number additional service responsibilities. In order to ensure that the service is making the best use of its resources, a full service restructure has now commenced with a view to offering best value for the department. In particular discussions are still taking place with the Anti-Social Behaviour Teams, Environmental services, West Yorkshire Police and the ALMOs to look at how the various services can better linked together to improve service delivery, collate accurate information for service users and to provide a more pro-active response to issues of public concern, through improved collating of data / information and intelligence sharing between agencies.

3.52 Leeds Anti Social Behaviour Team

3.53 Prior to implementation of the multi-agency Leeds Anti-social behaviour Team (LASBT) Anti Social Behaviour was responded to across a range of agencies each working to differing thresholds and service standards making direct comparison of city wide performance data difficult.

3.54 Customer satisfaction with the case outcome is influenced by many factors including the victims own expectations, and the complexity of the case. LASBT procedures are customer focused. For example, in supportively managing victim expectations, exploring potential solutions, and identifying and responding to individual needs. LASBT works to resolve cases at the earliest opportunity. Customer feedback suggests that the process is working. Comments include *'efficient and professional, response received'* from an *'invaluable service'*.

3.55 Customer satisfaction data is collated at case closure through customer (victim) surveys, which seek customer satisfaction levels in relation to various aspects of the service (please refer to chart below).

City Wide - Annual Figures	2008/9	2009/10	2010/11	2011/12
% Satisfaction with the case outcome.	61.6%	66.1%	60.3%	75.0%
% Satisfaction rating with overall service	72.2%	73.7%	70.4%	81.3%

3.56 LASBT data for 2011/12 has been drawn from on a total of 540 surveys from 1562 named victims (an overall response rate of 34.6%) giving a 95% confidence level with a 3.41% confidence interval. When compared with former ASBU survey responses, there have been significant improvements as a result of this joined up approach to ASB service delivery. LASBT data collated during 2011/12 will form the baseline from which future performance targets can be set. It is anticipated that performance data with regards to satisfaction in relation to outcomes and overall service will be available at ward level shortly.

3.57 The charts below outline the number of enquiries received, new cases opened and a summary of the legal outcomes.

LASBT Enquiries Received	
Ward	Grand Total
Temple Newsam	97
Cross Gates & Whinmoor	66
Garforth & Swillington	24
Kippax & Methley	38
LASBT New Cases Opened	
Ward	Grand Total
Temple Newsam	57
Cross Gates & Whinmoor	37
Garforth & Swillington	17
Kippax & Methley	19

LASBT Legal Outcomes						
Ward	Committal	Injunction	Injunction A with power of arrest	Possession	Possession secure	Grand Total
Temple Newsam	1	2			1	4
Cross Gates & Whinmoor		1		2		3
Garforth & Swillington		1		2		3
Kippax & Methley			1			1

Ward Performance

Ward	7) Overall, how satisfied were you with the service?					Grand Total	% 'Satisfied' or 'Very Satisfied'
	Very Satisfied	Satisfied	Neither Satisfied nor Dissatisfied	Dissatisfied	Very Dissatisfied		
Cross Gates and Whinmoor	15	1	1		1	18	88.9%
Garforth and Swillington	1	1				2	100.0%
Kippax and Methley	3				1	4	75.0%
Temple Newsam	10	3	3	1		17	76.5%
Grand Total	29	5	4	1	2	41	82.9%

3.58 Overall Performance of North East Divisional Community Safety Partnership and Ward crime statistics - MARCH 2012

Reduce Crime and its Impact					
Reduce the level of Total Recorded Crime	D/I	22,590	▼	24,693	Down 8.5% (2103 fewer crimes) compared with the same period last year
Reduce the level of Serious Acquisitive Crimes	7,169	5,745	▼	7,169	Down 20% (1424 fewer crimes) compared with the same period last year
Reduce the level of Domestic Burglary	3,434	2,946	▼	3,615	Down 19% (669 fewer crimes) compared with the same period last year
Reduce the level of Violent Crime	D/I	3,845	▼	4,305	Down 11% (460 fewer crimes) compared with the same period last year
Reduce the level of Assault with Injury	D/I	1,526	▼	1,741	Down 12% (215 fewer crimes) compared with the same period last year
Effectively Tackle ASB					
Reduce the proportion of residents who believe that ASB has increased in their local area	13.1%	12.0%	▼	12.4%	Variation from target Trajectory -1.14%
Reduce the proportion of repeat locations for ASB	D/I	11.0%	▼	11.0%	To Feb-2012, 20 fewer repeat locations when compared with the same period last year
Improve the percentage of customers/victims happy with the time taken to respond to their enquiry (LASBT 4 week survey)	B/Y		▲		Divisional breakdown from LASBT under development
Improve the percentage of customers/victims satisfied with the case officers investigation to date (LASBT Closed Case Survey)	B/Y		▲		
Improve the percentage of customers/victims that were satisfied with the case outcome (LASBT Closed Case Survey)	B/Y		▲		
Improve the percentage of customers/victims that were satisfied with the overall service (LASBT closed survey)	B/Y		▲		
Improve Safeguarding & Reduce Vulnerability					
Reduce the repeat victimisation rate for MARAC domestic violence cases	19%	11.0%	▼	11.0%	Rolling 12 months to Feb, 193 cases, 22 repeats

YTD = year to date

PYE = predicated year end

D/I = diagnostic indicator, no target set as contributes to a set indicator (proxy measure)

B/Y = baseline year

PY= Rolling 12 month previous year

3.59 Crime & ASB: 2011/12

3.60 Overall a really successful year in relation to recorded crime and Anti social behaviour. Across the Outer East area committee there has been an overall reduction of 864 recorded crimes and 1483 less anti social behaviour calls .

3.61 The below statistics show crime and anti-social behaviour from 1st April 2011 until March 31st 2012 by ward areas compared to the same dates for previous year.

CRIME	GARFORTH & SWILLINGTON			
	2010/11	2011/12	Difference	% Inc / Dec
AGGRAVATED TWOC	3	1	-2	-66.67
ARSON	7	4	-3	-42.86
BURGLARY DWELLING	128	91	-37	-28.91
BURGLARY OTHER	111	72	-39	-35.14
CRIMINAL DAMAGE - BUILDING NON DWELLING	13	10	-3	-23.08
CRIMINAL DAMAGE - DWELLING	39	17	-22	-56.41
CRIMINAL DAMAGE - MOTOR VEHICLE	92	52	-40	-43.48
CRIMINAL DAMAGE - NON SPECIFIC	32	19	-13	-40.63
INTERFERENCE WITH VEHICLE	1	7	6	600.00
ROBBERY	6	3	-3	-50.00
THEFT FROM PERSON	10	9	-1	-10.00
THEFT FROM VEHICLE	64	49	-15	-23.44
THEFT OF VEHICLE	16	11	-5	-31.25
TWOC	8	3	-5	-62.50
VIOLENT CRIME	106	105	-1	-0.94
Grand Total	636	453	-183	-28.77

ANTISOCIAL BEHAVIOUR CALLS	825	504	-321	-38.91
HATE CRIME	9	2	-7	-77.78

CRIME	KIPPAX & METHLEY			
	2010/11	2011/12	Difference	% Inc / Dec
AGGRAVATED TWOC	2	4	2	100.00
ARSON	20	8	-12	-60.00
BURGLARY DWELLING	101	78	-23	-22.77
BURGLARY OTHER	105	117	12	11.43
CRIMINAL DAMAGE - BUILDING NON DWELLING	13	15	2	15.38
CRIMINAL DAMAGE - DWELLING	34	34	0	0.00
CRIMINAL DAMAGE - MOTOR VEHICLE	57	63	6	10.53
CRIMINAL DAMAGE - NON SPECIFIC	30	18	-12	-40.00
INTERFERENCE WITH VEHICLE	5	19	14	280.00
ROBBERY	4	1	-3	-75.00
THEFT FROM PERSON	6	3	-3	-50.00
THEFT FROM VEHICLE	49	89	40	81.63
THEFT OF VEHICLE	12	13	1	8.33
TWOC	7	8	1	14.29
VIOLENT CRIME	121	103	-18	-14.88
Grand Total	566	573	7	1.24

ANTISOCIAL BEHAVIOUR CALLS	998	604	-394	-39.48
HATE CRIME	1	9	8	800.00

Public Confidence and User Satisfaction in the police (Garforth & Swillington and Kippax & Methley

Public Confidence	March 2011	March 2012	
Confidence in local policing	59.8%	63.1%	+ 3.3%
Overall Satisfaction	83.1%	85.6%	+2.5%
Perceptions of ASB Increasing	12.2%	10.7%	-2.5%

CROSSGATES & WHINMOOR				
CRIME	2010/11	2011/12	Difference	% Inc / Dec
AGGRAVATED TWOC	4	1	-3	-75.00
ARSON	13	17	4	30.77
BURGLARY DWELLING	285	299	14	4.91
BURGLARY OTHER	180	133	-47	-26.11
CRIMINAL DAMAGE - BUILDING NON DWELLING	29	27	-2	-6.90
CRIMINAL DAMAGE - DWELLING	117	110	-7	-5.98
CRIMINAL DAMAGE - MOTOR VEHICLE	138	118	-20	-14.49
CRIMINAL DAMAGE - NON SPECIFIC	53	34	-19	-35.85
INTERFERENCE WITH VEHICLE	8	11	3	37.50
ROBBERY	14	14	0	0.00
THEFT FROM PERSON	41	26	-15	-36.59
THEFT FROM VEHICLE	93	65	-28	-30.11
THEFT OF VEHICLE	21	13	-8	-38.10
TWOC	22	10	-12	-54.55
VIOLENT CRIME	243	202	-41	-16.87
Grand Total	1261	1080	-181	-14.35

ANTISOCIAL BEHAVIOUR CALLS	1413	933	-480	-33.97
HATE CRIME	13	9	-4	-30.77

TEMPLE NEWSAM				
CRIME	2010/11	2011/12	Difference	% Inc / Dec
AGGRAVATED TWOC	0	4	4	
ARSON	16	13	-3	-18.75
BURGLARY DWELLING	348	248	-100	-28.74
BURGLARY OTHER	161	129	-32	-19.88
CRIMINAL DAMAGE - BUILDING NON DWELLING	11	15	4	36.36
CRIMINAL DAMAGE - DWELLING	114	99	-15	-13.16
CRIMINAL DAMAGE - MOTOR VEHICLE	125	85	-40	-32.00
CRIMINAL DAMAGE - NON SPECIFIC	39	42	3	7.69
INTERFERENCE WITH VEHICLE	17	16	-1	-5.88
ROBBERY	14	13	-1	-7.14

THEFT FROM PERSON	22	18	-4	-18.18
THEFT FROM VEHICLE	187	122	-65	-34.76
THEFT OF VEHICLE	25	23	-2	-8.00
TWOC	10	7	-3	-30.00
VIOLENT CRIME	253	201	-52	-20.55
Grand Total	1342	1035	-307	-22.88

ANTISOCIAL BEHAVIOUR CALLS	1019	731	-288	-28.26
HATE CRIME	29	22	-7	-24.14

Public Confidence and User Satisfaction in the Police (Crossgates& Whinmoor and Temple Newsam)

Public Confidence	March 2011	March 2012	
Confidence in local policing	54.7%	57.2%	+2.5%
Overall Satisfaction	76.1%	83.9%	+7.8%
Perceptions of ASB Increasing	10.8%	8.6%	-2.2%

4 Corporate Consideration

5 Consultation and Engagement

5.1 The North East Divisional Safety partnership works in partnership with the voluntary and community sector and when necessary carries out statutory consultation as appropriate

6 Equality and Diversity / Cohesion and Integration

6.1 Consideration is given to the equality impact of delivering the Safer Leeds strategy across North East Police Division . Where a negative equality impact is identified action will be taken to mitigate the impact or risk.

7 Council policies and City Priorities

7.1 The North East Divisional community safety partnership delivers directly against The Safer and Stronger Communities Board Partnership plan 2011-2015

8 Resources and value for money

8.1 The work undertaken by the DCSP is underpinned by maximisation of resources through effective partnership work

9 Legal Implications, Access to Information and Call In

9.1 There are no exempt or confidential information contained in this report

9.2 There are no legal implications associated with this report

9.3 There are no key decisions associated with this report , so it is not subject to call in

10 Risk Management

10.1 There are no major risks associated with the content of this report

11 Conclusions

11.1 Overall a very successful year for North East in relation to overall crime reduction , public confidence and increased performance and perceptions in dealing with anti social behaviour . The DCSP will continue to prioritise burglary dwelling during 2012/13 to ensure reductions are sustained and further improvements are made.

12 Recommendations

12.1 Members are asked to continue supporting the Divisional Community Safety Partnership in relation to prioritising and tackling Burglary Dwelling during 2011/12 through partnership work at neighbourhood level.

13 Background documents ¹

13.1 Safer Leeds OBA Burglary Year End Report

13.2 Divisional community safety quarterly highlight reports

¹ The background documents listed in this section are available for inspection on request for a period of four years following the date of the relevant meeting. Accordingly this list does not include documents containing exempt or confidential information, or any published works. Requests to inspect any background documents should be submitted to the report author.

North East Leeds

April 2012

Confidence & Satisfaction

Performance Indicator	Target
Improve Confidence in Local Policing	62.4%
Improve the overall satisfaction rate of service users	87.6%
Improve the overall satisfaction rate for BME Service Users	84.1%
Improve the overall satisfaction rate for White Service Users	89.8%
<i>Emergency Response incidents (15 minute standard)</i>	
<i>User Satisfaction with being kept informed</i>	
<i>Public Confidence for BME residents</i>	
<i>Public Confidence for White residents</i>	
<i>Average number of days taken to locally resolve complaints.</i>	

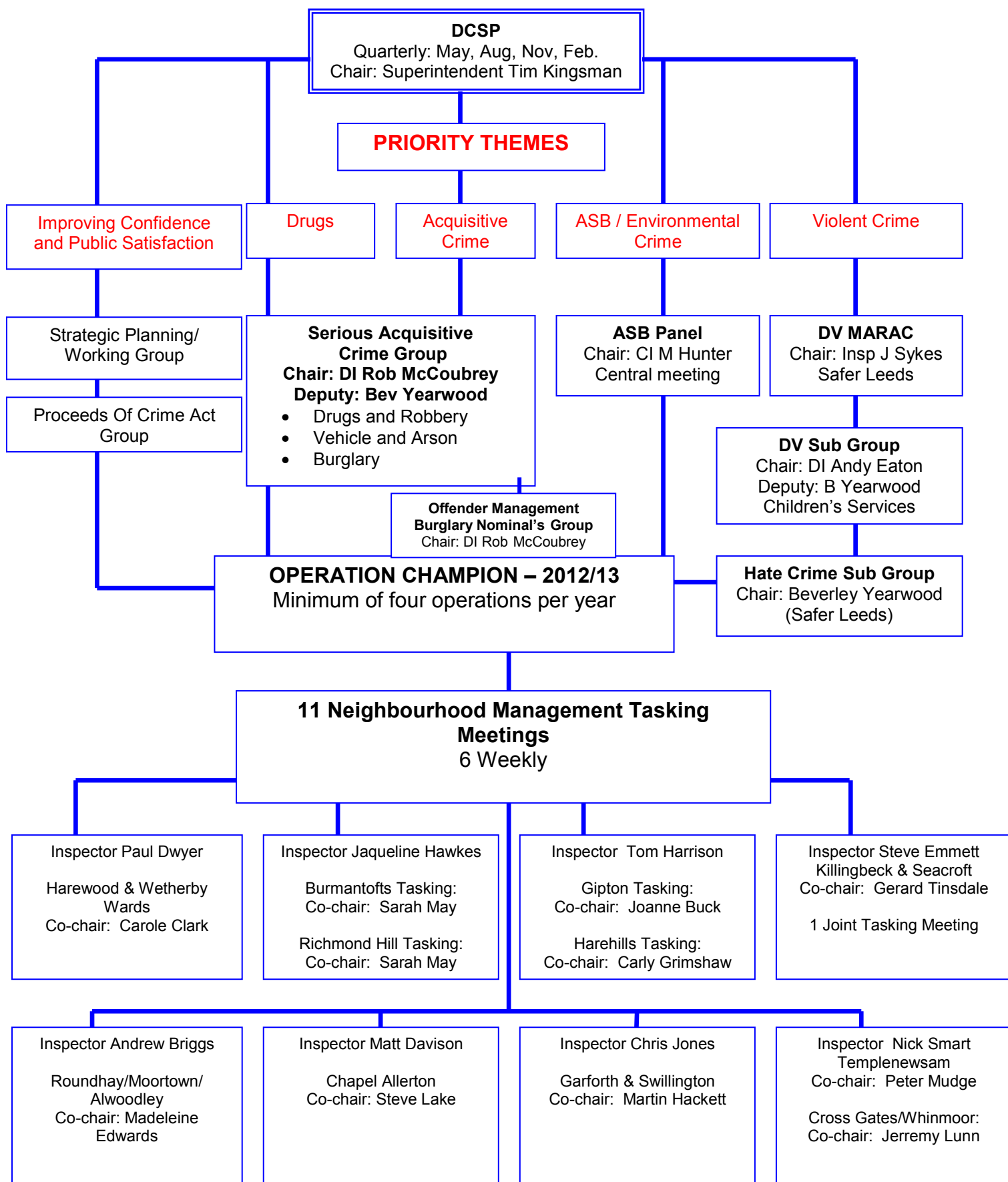
Local Policing

Performance Indicator	Target
Continue to tackle the level of acquisitive crime	5512
Reduce perceptions of ASB in local area	11.9%
Burglary Dwelling recorded	2713
<i>Assault with injury recorded</i>	
<i>Total Crime recorded</i>	
<i>ASB recorded</i>	
<i>Metal theft recorded</i>	

Protection of the Public from Serious Harm

Performance Indicator	Target
Continue to tackle the level of serious violent crime	83
Improve the repeat victimisation rate for domestic violence	39.9%
Stabilise the sanction detection rate for serious sexual offences	29.5%
<i>Domestic Violence Attrition</i>	
<i>Repeat offending rate for domestic violence</i>	

North East Division
Divisional Community Safety Partnership



Appendix C

Garforth and Villages				
POCA Ref	Date	Brief Description	Organisation	Amount Paid
336	26/05/2011	Swillinton Educational Charity - We are in desperate need of a new fridge. The building is used by a number of members of the community who all use the kitchen. In particular, the Pre-School Playgroup use it for snacks for the toddlers everyday as well as Scouts, Cubs, Youth Club and other members once a week. It is also needed for cooking projects and there is currently not enough room for storage which prevents us from carrying any out.	Swillinton Educational Charity	£250
338	08/06/2011	Garforth Mobile Bus - On the mobile youth bus the young people have a lack of activities and resources to help them engage in positive activities. Therefore the young people have suggested that they would like an X-box kinect to help them play interactive team games. We will pay the cost towards the games.	Leeds City Council Youth Service	£250
345	02/06/2011	Garforth and District Crime Prevention Initiative - part of a local crime prevention initiative whilst attending local public events as well as give crime prevention advice hand outs, a crime prevention device (purse lanyard) to members of the public. Target recipient being the elderly. Garforth Gala 03/07/11, Ledsham Gala 03/09/11, Elders event Great Preston 26/09/11, Elders Event Kippax 28/09/11, Elders Event Garforth 30/09/11.	Garforth and District Crime Prevention Panel	£250
359	31/10/2011	Kippax in Bloom - to extend and maintain previous works to further improve the environment of Kippax. We are honoured by the invitation to represent Yorkshire in the Queens Jubilee Year 2012 in Briton in Bloom.	Kippax in Bloom	£250
367	01/11/2011	NET Newsletter - promoting positive image of age and older people, reduce discrimination, empowering. Improve wellbeing and health improvement. Quarterly newsletter with info on health, benefits, winter warmth, crime scams. Would like POCA to assist with publication costs.	Neighbourhood Elders Team	£250
388	12/12/2011	New Lamps and Larders - Purchase 3 battery lamps and 4 new camp larders (food and storage) for use by 150 beavers clubs and scouts on camps and outdoor activities. These will help to provide safe lighting for inside the tents and safely store food off ground.	1st Garforth Scout Group	£482
394	23/12/2011	Instrument Purchase - purchase of a new cornet which will cost £2013.	Kippax Brass Band	£500
420	09/02/2012	Methley Mites - £428 to replace toys and £72 for a childrens entertainer	Methley Mites	£250
429	05/03/2012	Mums and tots Playgroup - set up a playgroup to bring people in the community together - to buy chairs and soft cushions.	Mini Me Mum and tots playgroup	£100

Temple Newsam

POCA Ref	Date	Brief Description	Organisation	Amount Paid
298	22/03/2011	Colton Juniors Under 11s Tuck Shop and Training Equipment - We would like equipment to run a tuck shop at our home matches to support and sustain the team. We would like to buy some training equipment to use during training sessions. We would also use the equipment bought with this grant at fundraising events for the club.	Colton Juniors Football Club	£250
301	22/03/2011	Crossgates over 60s Community Group - Active day trips to Whitby or Skegness as many do not get out due to health problems	Cross Gates over 60s Community Group	£250
304	22/03/2011	Summer Garden Equipment - To create a summer garden which will enable the people whom attend our weekly luncheon clubs and any other events to sit outside in the garden and enjoy the clement weather. Annually from May until September.	Swarcliffe Good Neighbours Scheme	£250
315	12/04/2011	Halton Moor Road Street Clean - Saturday 31st April 2011 street clean of Halton Moor Road & land at side where people from church & local community tidy up the area together. Funding to be spent on 2 skips, black bags.	Dayspring Church & Local Residents	£250
339	08/06/2011	3rd Cross gates Rainbows - Rainbows have fun! They take part in indoor and outdoor activities as part of their programme called the Rainbow Jigsaw - Look Learn Laugh and Love. Their meetings are full of games and activities which provide challenging opportunities for Rainbows to think for themselves and take an active part in unit decision-making. Everything a Rainbow does helps her to develop – it's an opportunity to look, learn, laugh and love. We will be using any funding to allow the girls to join 1st Cross Gates Guides on their annual holiday where the girls will take part in activities they can't do in the usual setting including walks, go-theatre trip, visiting Downing Street and loads more. The holiday will be happening 25-27 October 2011. Girls aged 5 – 7 years in the Cross Gates and Seacroft area (predominantly South Seacroft and the Poole estate).	3rd Cross Gates Rainbows	£250
360	10/11/2011	Annual Holiday to London - following on from the girls recent holiday to London, they have organised a sleepover as part of their Baden Powell Award for one night in December. They have also organised a follow up event for girls that cannot attend during Feb.	1st Manston Guides	£250